

A38 Blake Bridge

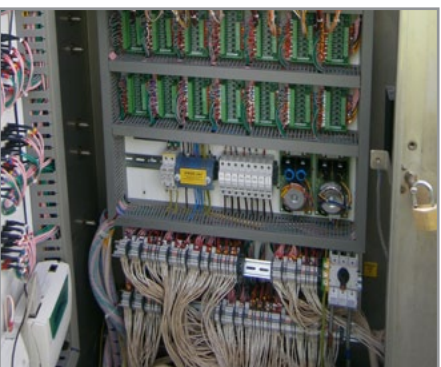
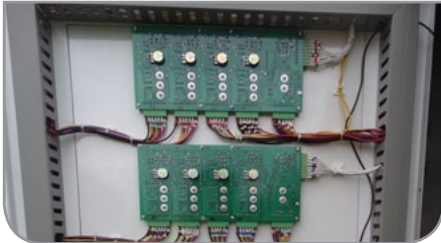
Bridgwater, Somerset

Client
Crestmoor Construction
Principal Contractor
Somerset County Council
Contract Value
£40,000
Contract Duration
Ongoing
Work Commenced
March 2013

The A38 Blake Bridge in Bridgwater, Somerset crosses over the River Parrot and was opened in March 1958 as part of the town's new relief road. The bridge is constructed of reinforced concrete and carries a dual carriageway road.

Impressed Current Cathodic Protection had been installed to the structures that form Blake Bridge. CCSL initially undertook investigation works on the existing remote monitoring and control equipment, which revealed that the control equipment had subsequently failed and required replacing.

Crestmoor Construction Limited engaged CCSL to undertake the design and replacement of the new Remote Monitoring and Control Equipment; the new control system was developed by Remco Systems Limited in conjunction with CCSL and was energised March 2013. CCSL were then engaged to undertake the performance monitoring remotely on behalf of Crestmoor Construction in conjunction with Somerset County Council.



CCSL, Innovation House, Euston Way, Town Centre, Telford, Shropshire TF3 4LT
Phone +44 (0) 1952 230900 Fax +44 (0) 1952 230906 Email info@freysinet.co.uk